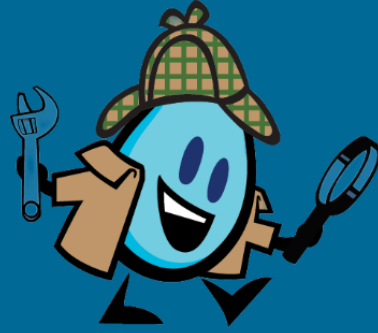




LIQUID

ENEWSLETTER



It's Fix a Leak Week!

Learn how to become a leak detective and fix leaks in your home from our WaterSense Partner!



Fix a Leak Week is here! It's time to start hunting down leaks — helping you save water & money.

Why do we celebrate Fix a Leak Week? The average household's leaks can account for nearly 10,000 gallons of water wasted every year — and 10% of homes have leaks that waste 90 gallons or more per day!

To check for leaks in your home, you first need to determine whether you're wasting water and then identify the source of the leak. Here are some tips for finding leaks:

💧 Take a look at your water usage during a colder month, such as January or February. If a family of four exceeds 12,000 gallons per month, there are serious leaks.

💧 Check your water meter before and after a two-hour period when no water is being used. If the meter changes at all, you probably have a leak.

Sign up for our online Water Usage Portal! The portal allows you to keep an eye on your household's overall water use — and will send you a leak alert if it flags excessive water use! (Which can then qualify you for a leak adjustment on your water bill & you find and fix a leak!)

Visit Water Usage Portal

Take the 10 Minute WaterSense Challenge



DETECT AND CHASE DOWN LEAKS



Did You Know

that easy-to-fix water leaks account for nearly 1 trillion gallons of water wasted each year in U.S. homes? In fact, the average household leaks nearly 10,000 gallons of water per year, or the amount of water it takes to wash 300 loads of laundry, and could be costing you an extra 10 percent on your water bills.

In just 10 minutes, you can search your home for leaks and crack down on water waste. Many common household leaks are quick to find and easy to fix. Worn toilet flappers, dripping faucets, and leaking showerheads all are easily correctable and can save on your utility bill expenses and water in your community.

So put on your detective hat, lace up your running shoes, and take this 10-minute challenge to detect and chase down leaks!

www.epa.gov/watersense/fix-leak-week



Start by Gathering Clues

These clues can help you detect leaks before you even start investigating your home.

1

Check Your Utility Bill

A place to start is to examine your utility bill for January or February. It's likely that a family of four has a serious leak problem if its winter water use exceeds 12,000 gallons (or 16 CCF) per month. You can also look for spikes—is your water use a lot higher this month than it was last month? Learn more about your water bill:

www.epa.gov/watersense/understanding-your-water-bill.

2

Read Your Water Meter

Find your water meter, which is usually near the curb in front of your home but can be inside your home (e.g., in the basement) in cold climates. Use a screwdriver to remove the lid on your meter, which is heavy and usually marked "water."

Now that you've found the meter, take a reading during a period when no water is being used. If the meter does not read exactly the same after two hours, you probably have a leak. Here's a tip on how to read a water meter:

www.smarthomewaterguide.org/how-to-read-your-water-meter.

3

Take a Toilet Test

Put a few drops of food coloring into the tank at the back of your toilet and let it sit for 10 minutes. If color shows up in the bowl, you have a leak. Make sure to flush afterward to avoid staining, and consider replacing your old toilet flapper if it is torn or worn. Check our Fix a Leak web page for handy videos that show you how to do it.

While you're waiting to see if your toilet has a leak, walk around your house with the checklist on the next page and see if you can chase down any other water wasters.

epa.gov/watersense

Checklist for Chasing Down Leaks

Here are some of the places leaks may be hiding in your home.

Some leaks require a simple fix—a worn toilet flapper, loose pipe connection, or showerhead with stray spray. But you may want to consult a licensed plumber to stop your running toilet, broken sprinklers, water heater drips, or malfunctioning water supply lines. Take a quick inventory of clues to water waste:

IN THE BATHROOM

- Toilets: Listen for running water and conduct the food coloring test described on the first page.
- Faucets: Listen for drips and turn on the tap to check for water going the wrong direction.
- Showerheads: Turn on and look for drips or stray sprays that can be stopped with tape.
- In the tub: Turn on the tub, then divert the water to the shower and see if there's still a lot of water coming from the tub spout; that could mean the tub spout diverter needs replacing.
- Under the sink: Check for pooling water under pipes and rust around joints and edges.

IN THE KITCHEN

- Faucet: Listen for drips and tighten aerators or replace fixtures if necessary.
- Sprayer: Check to make sure water is spraying smoothly and clean openings as needed.
- Under the sink: Check for pooling water under pipes and rust around joints and edges.
- Appliances: Check for pooling water underneath dishwashers and refrigerators with ice makers, which could indicate a supply line leak.

IN THE LAUNDRY OR UTILITY ROOM

- Under the sink: Check for pooling water under pipe connections.
- Clothes washer: Check for pooling water, which could indicate a supply line leak.

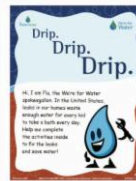
IN THE BASEMENT OR UTILITY ROOM

- Water heater: Check beneath the tank for pooling water, rust, or other signs of leakage.

DON'T FORGET TO GO OUTSIDE

- At the spigot: Ensure tight connections with the hose and see if the hose washer needs replacing.
- In-ground irrigation system: Check for broken sprinklers or nozzles spraying in the wrong direction. You may want to consult an irrigation auditor certified by a WaterSense labeled program to improve system efficiency: www.epa.gov/watersense/find-pro.

FOR THE KIDS



Kids aren't just the leaders of tomorrow, they're the dreamers and doers of today. "Test Your WaterSense" and try other fun activities at Flo's Kids Zone at: www.epa.gov/watersense/watersense-kids.

THROUGHOUT THE HOUSE

Check for signs of moisture or mold on your walls, ceilings, or floors. This could indicate that a pipe is wreaking havoc behind the scenes and requires the attention of a professional.

If you want to do a more detailed investigation for leaks, check out the Arizona Municipal Water Users Association Smart Home Water Guide at www.smarthomewaterguide.org.

If any of your fixtures needs replacing, remember to look for the WaterSense label when purchasing plumbing products. WaterSense labeled products are independently certified to use at least 20 percent less water and perform as well or better than standard models.

For more information, visit www.epa.gov/watersense/fix-leak-week.

MARK AN X FOR LEAKS



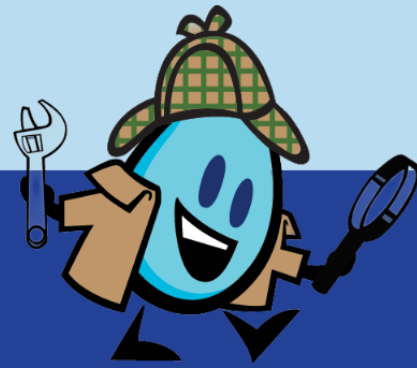
epa.gov/watersense

Download/Print Checklist

HAPPY ST. PATRICK'S DAY!

FIND YOUR OWN POT OF GOLD
DURING FIX A LEAK WEEK.





Find & fix toilet leaks to save water & money during Fix A Leak Week.



Learn more at epa.gov/watersense

🚽 A quick way to identify toilet leaks: Place a drop of food coloring in the toilet tank. If any color shows up in the bowl after 10 minutes, you have a leak! (Be sure to flush immediately after the experiment to avoid staining the tank.)

The most common culprit of toilet leaks are old or worn out toilet flappers (e.g., valve seal). This simple rubber device holds water in the tank, then releases water into the bowl when the toilet is flushed. Because the rubber can wear out, the flapper should be checked periodically and replaced at least every five years to ensure a good seal and avoid leaks. An old or worn flapper can cause your toilet to flush on its own or silently leak thousands of gallons a year.

🔧💧 Replacing a flapper is a quick and easy fix that will save water and money. If you need more help, you can also consult your local hardware store, home improvement, retailer, or a licensed plumber.

👉 Need more help identifying & fixing your toilet troubles? Check out this handy guide from Fluidmasters:

Toilet Repair Guide



**DON'T LET LEAKS
SEND YOUR MONEY
DOWN THE DRAIN.**




Leaking Faucets

Old and worn faucet washers and gaskets frequently cause leaks in faucets. A leaky faucet that drips at the rate of one drip per second can waste more than 3,000 gallons per year. That's the amount of water needed to take more than 180 showers! Many tutorials are available online for how to fix a wide variety of faucets. Here are a few examples:


- AWWA's [Drip Calculator](#) helps you see how drips add up to gallons wasted.
- Lowe's [How to Fix a Dripping or Leaky Double Handle Faucet](#).
- Lowe's [How to Fix a Dripping or Leaky Single Handle Faucet](#).
- The Home Depot [How to Fix a Leaky Bathtub Faucet](#).
- WaterSense Bath Hack #2 shows you [How to Replace your Faucet Aerator](#).

Tip: Don't forget to turn off the water line before you start!

Leaking Showerheads

 A showerhead leaking at 10 drips per minute wastes more than 500 gallons per year. That's the amount of water it takes to wash 60 loads of dishes in your dishwasher!

Some leaky showerheads can be fixed by making sure there is a tight connection between the showerhead and the pipe stem and by using pipe tape to secure it. Pipe tape, also called Teflon tape, is available at most hardware stores, is easy to apply, and can help control leaks.

 This [WaterSense Showerhead Bath Hack #1 video](#) shows how easy it is to add teflon tape and replace your showerhead.

For more complicated valve leaks in showers that drip when not in use, contact an experienced handyperson or licensed plumber.

Tip: It's also a good idea to check and, if needed, replace the washer or "o" ring inside the showerhead while making this repair.

SAVE WATER WITH A 5-STEP SPRINKLER SPRUCE UP!



Spring officially starts this week!

The arrival of the new season is a good time to make sure your irrigation system is working efficiently!

If you have an in-ground irrigation system, check it to make sure it wasn't damaged by frost or freezing. An irrigation system that has a leak 1/32nd of an inch in diameter (about the thickness of a dime) can waste about 6,300 gallons of water per month!

How To Do A "Sprinkler Spruce-Up"

- 1. Inspect for Breaks & Leaks:** Look for broken sprinkler heads or any leaks in your irrigation system! *Tip: Look for heads that do not pop up fully or are tilted as they can unexpectedly spray to the wrong areas. If you find any*

breaks or leaks, place a flag next to it so you can fix it yourself later or a professional will know exactly where to look. Follow this [checklist](#) to walk through each zone of your irrigation system.

2. **Connect Sprinklers, Pipes & Valves:** Leaks can occur at the joints between sprinklers and the piping. Leaking joints can also be a sign of too much water pressure or particles in the water. Check your pressure regulator is installed properly. *Tip: Between irrigation cycles, look for areas of the landscape with water pooling on the surface; that could be a sign of an underground leak. Check the connections inside valve boxes to make sure all the valves and other components are securely connected and that the valves can shut. If the valves are not able to close completely, your system could slowly seep water even when it is turned off.*
3. **Direct Sprinklers for Best Water Coverage:** Are you watering the driveway, house, road or sidewalk instead of your yard? Irrigation water that lands on hardscapes goes to the stormwater drain instead of the landscape. Any sprinklers that are spraying onto hardscapes should be turned towards the landscape. The sprinkler can be adjusted to as wide or as narrow as necessary. *Tip: Consider installing spray sprinkler bodies with integral pressure regulation which maintain consistent water pressure so that nozzles can operate efficiently.*
4. **Select an Irrigation Controller from the WaterSense Label:** A [WaterSense labeled irrigation controller](#) uses local weather data or monitors the level of moisture in the soil to automatically adjust your irrigation schedule. Irrigation controllers have intuitive programming controls to schedule irrigation based on the plant water requirement.
5. **Schedule & Make Sure You're Following HHI Ordinance:** Check that your irrigation controller is programmed correctly. If you manually set the time, aim for watering first thing in the morning or in the evening, avoiding the heat of the day. *Tip: Don't forget about HHI's Town Ordinance — irrigation is limited to no more than twice per week & your irrigation system must have a working rain gauge. View the full ordinance below.*

[Full Sprinkler Spruce-Up Guide](#)



Follow the Island's irrigation laws



EVEN # ADDRESS
WATER YOUR LAWN ON
TUESDAY & SATURDAY



ODD # ADDRESS
WATER YOUR LAWN ON
WEDNESDAY & SUNDAY



**ALL IRRIGATION
SYSTEMS MUST HAVE
A WORKING RAIN
SENSOR.**

**DID YOU
KNOW ?**

40 to 60% of the demand for treated drinking water on Hilton Head is due to residential landscape irrigation.
Please water wisely.

More Smart Irrigation Tips

INCOME-BASED FINANCIAL ASSISTANCE IS AVAILABLE.



project
safe
SEWER ACCESS FOR EVERYONE



Is your home still using a septic tank on Hilton Head?

Connect Now to the public sewer!

If finances are the issue, project SAFE helps make public sewer access available to everyone on the island. Deep Well volunteers are on standby to help income-qualified homeowners complete the Project SAFE application that provides financial assistance to those eligible for the program. For more information, contact Deep Well at 843-785-2849 or deepwellprojectthi@gmail.com.

Or learn more on our website by clicking the link below.

[Connect Now](#)

March madness = mulch madness

Now that Spring is here, it's time for mulch madness!
Use mulch for a water-smart landscape.



While we tune into #MarchMadness, it's also time to think about #MulchMadness!

Now that Spring has arrived, make sure your garden & landscaping is water smart!

Using mulch in your gardening & landscaping can help you save water — as well as help protect your plants. Mulch helps reduce evaporation, which allows soil to retain water longer and means plants require less frequent watering.

Different plants require different soil conditions, so it's best to choose a mulch type based on plant varieties and their soil needs. Organic mulch such as hardwood chips, straw, leaves, pine needles, or grass clippings will help improve

the condition of soil, by adding nutrients as it decomposes. Inorganic mulches like rocks, pebbles, or gravel may help to eliminate weeds. Avoid using rock mulches in sunny areas or around non-arid climate plants, as they radiate large amounts of heat and promote water loss that can lead to scorching.

Applying mulch to a depth of three to four inches provides the right coverage for most plants; excessive amounts of mulch can restrict water flow to plant roots. Leave a few inches of space between organic mulches and the base of trees or other woody plants to prevent rot. Don't forget to pull any weeds prior to mulching and spread evenly to prevent thin areas where the mulch can't do its job.

More Tips from our WaterSense Partner

Community Happenings



WINGFEST

A Chicken Wing Festival
Hilton Head Island, South Carolina
Lowcountry Celebration Park
Main Event: March 21, 11am-5pm

Sparklight

Hilton Head Wingfest March 20-21

Saturday's event will feature 20 to 25 local restaurants cooking their best chicken wings, with more than 8,000 pounds served in a fun filled, family friendly festival atmosphere. The event will include a variety of activities for all ages, such as a kids' zone, a rock climbing wall, and a bungee jump. Guests can cheer on or participate in the Kids' Wing Bobbing Competition and the Adult Wing Eating Contest. Attendees will also have the opportunity to vote for their favorite wings and watch the winning restaurant be crowned at 4:30 PM. Admission is \$10. Children under 11 are free. Food/drink/activities sold separately. Festival is credit cards only! Proceeds benefit The Carmines Family Recreation Scholarship Fund. Learn more [here](#).

Celebrate *the* Pour

HILTON HEAD ISLAND

WINE & FOOD

FESTIVAL

Hilton Head Island Wine & Food Festival

March 22-28

The Hilton Head Island Wine and Food Festival makes its return March 22-28, 2026, bringing with it beautiful weather, delicious sips and tasty bites from the region's culinary leaders.

The Hilton Head Island Wine and Food Festival has been proudly supporting the community for 41 years. Proceeds from our wine auctions at the Grand Tasting and Public Tasting events benefit the John F. & Valerie Currie Educational Scholarship Fund for college students pursuing a degree in the hospitality and tourism field. The scholarships are currently offered at the University of South Carolina Beaufort and the Technical College of the Lowcountry. In the past nine years, the Festival has supported deserving students with \$155,000 in contributions from the scholarship fund. Learn more [here](#).

Hilton Head PSD Affiliations

We are proud to partner with the following organizations.





[MORE INFORMATION](#)



Hilton Head Public Service District | 21 Oak Park Drive | Hilton Head Island, SC 29926 US

[Unsubscribe](#) | [Update Profile](#) | [Constant Contact Data Notice](#)



Try email marketing for free today!