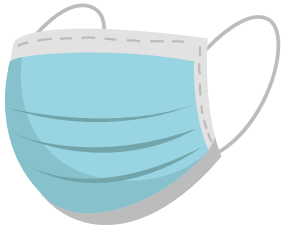


WHAT DO I FLUSH?

WHAT SHOULD YOU FLUSH DOWN
THE TOILET, YOU ASK?



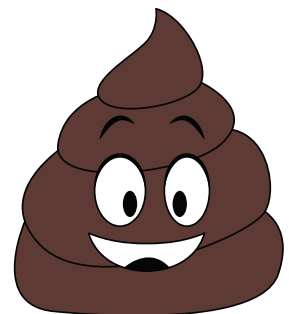
YOU SHOULDN'T FLUSH WIPES OR
YOUR FACE MASK.

THROW THOSE IN THE TRASH;
NAPKINS AND PAPER TOWELS, TOO.



YOU SHOULD ONLY FLUSH
TOILET PAPER ...

... AND YOUR PEE AND POO.



OH NO! TOYS CAN'T GO DOWN THE TOILET!

✗ FLUSHING TOYS WILL
CAUSE AN ICKY MESS!

✓ ONLY FLUSH
YOUR PEE AND POO!
(AND TOILET PAPER, TOO!)

