



# LIQUID ENEWSLETTER



## Hilton Head PSD Water Quality Laboratory recognized as Laboratory of Excellence

Hilton Head Public Service District's (PSD) Water Quality Laboratory has once again been recognized as a Laboratory of Excellence as part of its annual certification by the S.C. Department of Environmental Services.

The independent agency that conducts the certification recognized the PSD lab "achieving 100% acceptable data" in a group of more than 370 participating labs, according to a statement from the independent agency.

*"This achievement is a demonstration of the superior quality of the laboratory," according to the statement.*



The PSD Water Quality Laboratory conducts thousands of tests annually on the quality of our tap water and treated recycled water. It is led by PSD Water Quality Supervisor Sarah Hickman.

*“The PSD has a longstanding track record of providing top quality drinking water, and ensuring environmental protection through our recycled water services, and that work includes a commitment to accurate and reliable scientific monitoring of our water,” said PSD General Manager Pete Nardi. “We are honored to once again have our PSD Water Quality Laboratory and Sarah Hickman’s excellent work recognized as part of our state certification.”*

[View Water Quality Reports](#)



## PSD's Long-Range Water Supply Projects Continue on Hilton Head

The PSD's long-range water supply projects are progressing. Drilling of a new, 600-foot-deep, well into the brackish Middle Floridan Aquifer at the Old Welcome Center site off William Hilton Parkway is commencing. The well is necessary to boost the capacity of the PSD's Reverse Osmosis (RO) Drinking Water Treatment Facility on Jenkins Island to 6 million gallons of water a day. Work inside the RO facility is commencing as well. New filtration arrays will be added along with associated pumps. The project also includes the addition of an emergency generator and expansion of the liquid chlorine treatment system at the facility. The expansion project is anticipated to conclude in late 2026.

The PSD also continues work on a second Aquifer Storage & Recovery (ASR) facility. It is being constructed on the Ashmore Track adjacent to the PSD's Oak Park Drive property. The ASR facility will be capable of storing approximately 260 million gallons of treated drinking water in the Middle Floridan Aquifer during the winter months and then withdrawing and retreating the water for distribution during the spring and summer, yielding 2 million gallons of water a day. The ASR strategy is key for disaster resiliency as well as for the ability to meet peak demands. The PSD's first ASR facility, at its Royal James Drive property, has been in operation since 2011 and played a key role in the recovery from Hurricane Matthew in 2016. The second ASR facility is anticipated for completion in 2027.

The PSD also has constructed a Water Booster Pumping Station at its ground storage tank site on Gardner Drive. The booster station replaces pumps that have been in service for more than 40 years!

These critical long-range water supply projects represent an investment of approximately \$29 million and are being constructed utilizing a \$10-million grant from the State of South Carolina and a \$1-million grant from Beaufort County.

**Visit our  
Website**

---



# IT'S NATIONAL GOLF MONTH!

HILTON HEAD PSD HELPS KEEP  
ISLAND COURSES GREEN



**It's National Golf Month!**

**Did you know Hilton Head PSD transforms over 1 billion gallons of residential and commercial wastewater each year into beneficial recycled water?**

**Some of this recycled water is then used to irrigate 12 golf courses, keeping them lush and playable — without tapping into the island's precious drinking water supply.**

**Here's a look at how the process works:**

- 1. Wastewater enters screens and grit chambers to filter out large solids.**
- 2. Microbes in aeration basins break down organics.**
- 3. Sedimentation tanks separate out solids.**
- 4. Chlorine is added to kill remaining bacteria.**
- 5. Tertiary treatment removes fine particles, then the treated water is stored and sent to golf courses and wetlands.**

This isn't your average wastewater treatment — it's a full-circle system designed to conserve drinking water, support natural habitats, and fuel our local golf industry.

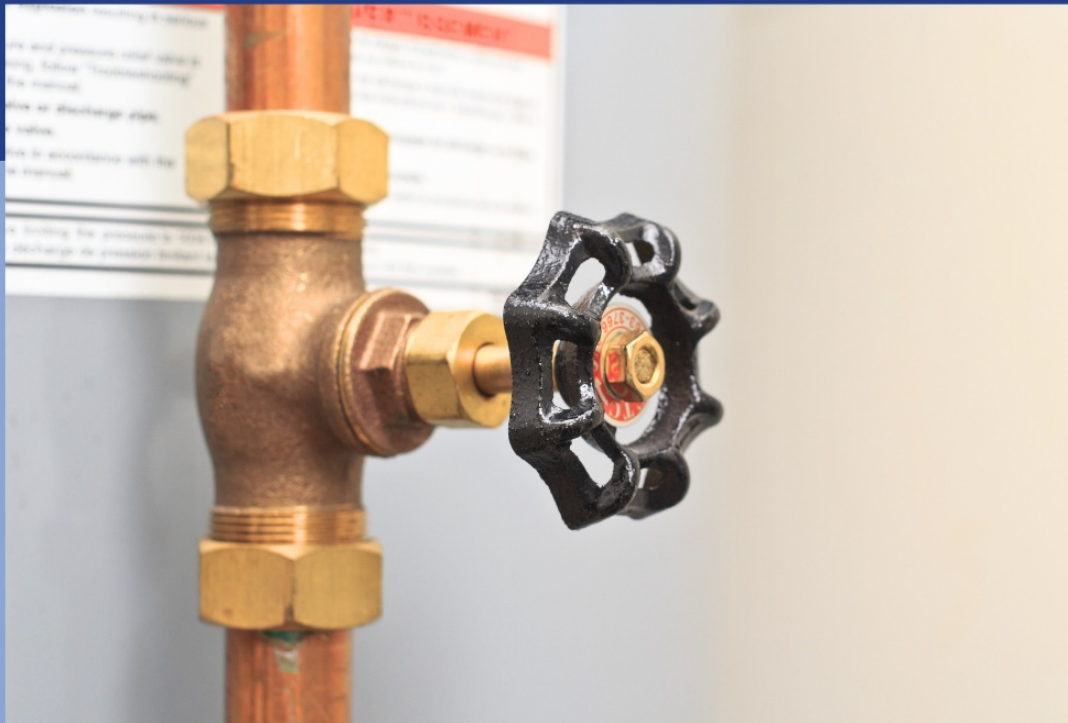
Some of the recycled water is also used to nourish multiple wetlands on the island, which are vital habitats for birds and other wildlife. Hilton Head PSD is even Audubon-certified for its environmental stewardship efforts.

So as you enjoy that perfect round this National Golf Month, remember: it's more than a game. It's a sustainable, island-first water solution in action.

Learn more about our Recycled Water Program at the link below.

[Read  
More](#)

## DO YOU KNOW WHERE YOUR MAIN WATER VALVE SHUT OFF IS?



One of the biggest tips we give for hurricane preparedness: Make sure everyone in your household knows where your main water shut-off valve is located!

Being able to shut off the water isn't just important in the case of a hurricane — but it's something you should know for many types of emergencies, including leaking pipes.



If you don't know where it's located, the main water valve (usually with a wheel-type handle) is normally located either on the customer side of the meter box or just outside the point where the service line penetrates the foundation of the house.

It will be in line with your water meter, which is usually located near the edge of your property line near the street. The valve can be operated to provide water, if available, for sanitary services only.



**IT'S ALMOST PEAK HURRICANE SEASON**

# **Are you storm ready?**

Learn how to prepare your home and family  
at [hhpsd.com/hurricane-preparedness/](https://hhpsd.com/hurricane-preparedness/)



The peak of the Atlantic hurricane season is typically considered to be mid-August through mid-October, though the season runs through the end of November.

Stay prepared in case a storm does head our way:

- ☐ **Prep your water** – stock 2 quarts per person/day (plus pets!), store in clean sealed containers, and keep extras for flushing or washing.
- ☐ **Know your valves** – learn where your main and appliance shut-offs are (e.g., water heater, washer) and how to use them before a storm.
- ☐ **Keep your emergency kit stocked** – include non-perishables, meds, flashlights, chargers, hygiene items, pet supplies, and important docs.
- ☐ **Secure your space** – clear yard debris, check foundations, roofs, gutters, trim trees, and secure sheds or loose items.

Hilton Head PSD is trained and ready — but having your own backup plan is key to riding out any outage, boil-water alert, or service delay.

[More Hurricane Tips](#)

---





## Follow the Island's irrigation laws



**EVEN # ADDRESS**  
WATER YOUR LAWN ON  
TUESDAY & SATURDAY



**ODD # ADDRESS**  
WATER YOUR LAWN ON  
WEDNESDAY & SUNDAY



**ALL IRRIGATION  
SYSTEMS MUST HAVE  
A WORKING RAIN  
SENSOR.**

**DID YOU  
KNOW**



**40 to 60%** of the demand for treated drinking water on Hilton Head is due to residential landscape irrigation.

***Please water wisely.***

**Please make sure you're following Hilton Head's local ordinance on irrigation!**

This ordinance limits outdoor irrigation to just two days a week—with even-numbered homes watering on Tuesdays & Saturdays and odd-numbered homes on Wednesdays & Sundays. Commercial properties have their own schedule, too.

Plus, all new irrigation systems must include a working rain sensor to prevent watering right after rainfall. That's a smart way to avoid waste — and it's the law!

Why does this matter? Residential irrigation accounts for a whopping 40–60% of our treated water use here on the island. By sticking to the rules — setting timers for early morning or evening and maintaining rain sensors — we help protect our local water supply and environment.



**Water Smarter by following these water tips:**

- Avoid watering during the heat of the day — set your irrigation timer to the early morning or late evening hours.
- Make sure you're not watering the sidewalk, driveway or road — direct your sprinklers to only water your lawn and/or plants.
- Upgrade to a WaterSense-labeled irrigation system or hire a pro to help with your irrigation plan/make sure your system is working efficiently

**More Water Efficiency  
Tips**



**JOIN  
THE SEA PINES  
RESORT'S ANNUAL  
BEACH SWEEP**

- **FRIDAY**
- **SEPTEMBER 12TH**
- **THE SEA PINES BEACH CLUB**
- **2-3 P.M.**

[HTTPS://WWW.SEAPINES.COM/EVENTS/BEACH-SWEEP](https://www.seapines.com/events/beach-sweep)





Help keep our beaches beautiful! Join the Sea Pines Resort for their annual Beach Sweep on Sept. 12.

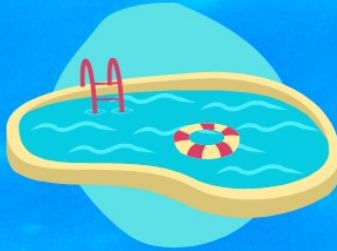
Be part of South Carolina's largest one-day beach cleanup! Every piece of trash makes a difference.

More  
Info

## Don't waste water this summer!



**Only run full loads  
in the dishwasher &  
washer**



**Use a pool cover  
to reduce  
evaporation**



**Aim for 5-minute  
showers**



**Check your  
home and  
irrigation system  
for leaks**



**Don't use your  
sprinkler during  
the heat of the  
day**





# Can't afford to upgrade to a sewer connection?

Project SAFE can help cover all or a portion of costs for income-qualified homeowners.

Your first step is to call the Deep Well Project at (843) 785-2849 to apply.



[Connect Now](#)



World Water Week is almost here — marking a great time to appreciate the clean, reliable water we all depend on.

From source to tap (and back again), Hilton Head PSD is here to keep our island flowing.

Learn more about our water on our website. Just click the button below!

[Learn  
More](#)



# Don't flush prescription medications.



**✗ Flushing drugs down the toilet  
(or throwing them in the trash)  
can contaminate our water.**

**✓ Take unused medications to Beaufort  
County's drop-off boxes.**



Just a quick reminder: please don't flush prescription medications down the toilet, pour them down the drain or throw them in the trash — it can contaminate our waterways and harm aquatic life.

Instead, use one of the year-round free drop-off boxes available across Beaufort County. No IDs, no paperwork — just walk in Mon–Fri 9 a.m.–5 p.m. and an officer will assist you.

☐ Beaufort County Sheriff's Office, Hilton Head Island — 70 Shelter Cove Ln.

Let's keep our sewers flowing, our environment clean, and our community safe.

*Tip: Only flush the "4 Ps" — pee, poo, toilet paper, puke.*

Find additional drop-off locations and learn more about what not to flush on our website.

## What Not To Flush



*Start planning your Fall garden*

**AND INCORPORATE  
NATIVE PLANTS!**

Browse the Clemson Extension's Database

Dreaming of cooler days?

While we still have a while until the official start of Fall, it's a great time to start working on your Fall garden!



Make sure you include native plants — not only to help pollinators, but also to create a lower-maintenance garden!

Find the best native plants for your garden with our Clemson partner's database:

**Learn  
More**

---

## Community Happenings



HarbourFest at Shelter Cove Harbour & Marina is a weekly celebration during the summer with live music & entertainment, arts & crafts, kids' activities & Tuesday night fireworks.

[Learn more here.](#)

### Hilton Head PSD Affiliations

We are proud to partner with the following organizations.



[MORE INFORMATION](#)



Hilton Head Public Service District | 21 Oak Park Drive | Hilton Head Island, SC 29926 US

[Unsubscribe](#) | [Update Profile](#) | [Constant Contact Data Notice](#)



Try email marketing for free today!